



PANAMA CANAL SOCIETY 2025 REUNION

PLEASE CAREFULLY READ ALL THE INFORMATION IN
THIS PACKET PRIOR TO REGISTERING.

July 2 - 6, 2025 - Orlando, Florida

2025 ANNUAL REUNION REGISTRATION PACKET

Reunion Coordinator - Bill McLaughlin

VOLUNTEER CHAIRPERSONS AND CO-CHAIRPERSONS

On-Site Reunion Coordinator.....>	Carl Orvis
On-Site Reunion Logistics Coordinators.....>	Mike Young (Team Leader), David Dahlstrom, Bosco Hoyte, Bill Lane and Ted Kaufer
Reunion Registration.....>	Kelly Fenton, Jim Parthenais, and Cheryl Williams
Hotel Reservations / Lodging Chairperson.....>	Betty LeDoux and Debbie Lane
Information/Society Office.....>	Kathy Malin and Penny Canamas
Annual Meeting (All PCS Members Meeting).....>	Carl Orvis
Ticket Sales	Bill Lane
Golf Tournament	Dave Bishop
Vendors	Mike Young, Allison McLaughlin, and Jacque Vowell
Bingo.....>	"Bingo" Ted Kaufer
Friday After Hours Night Club Dance (DJ).....>	David Dahlstrom and Bosco Hoyte
Annual Luncheon	Penny Canamas
Saturday Night Ball.....>	Shift#1 Bosco Hoyte and Dixie Barons Shift#2 Jacque Vowell and David Dahlstrom
Security Liaison with RSC Resort	Allison McLaughlin
Class and Mini-Reunions	Jacque Vowell
Despedida Lottery	Raymond Husum
Dance Class, Murga, Despedida.....>	Bill McLaughlin
Cultural Seminar.....>	Bill McLaughlin and UF Smathers Libraries
Corporate Sponsors	Bill McLaughlin, Kathy Malin and Kelly Fenton
Pool Party.....>	Mike Young and Betty LeDoux
Catholic Mass.....>	Cheryl Williams and Dixie Barons
Decorations.....>	Margaret McLaughlin

DEADLINE DATES FOR 2025 REUNION

May 23, 2025

REUNION REGISTRATION
HOTEL RESERVATIONS
GOLF TOURNAMENT
VENDOR APPLICATIONS

ANNUAL LUNCHEON
TICKET PURCHASES
BAILE PANAMEÑO DANCE CLASS

REFUND DEADLINES - JUNE 12, 2025 (TICKETS, GOLF, VENDORS) - CONTACT PCS OFFICE

Note: Reunion Registration Fees are not refundable.

Members are encouraged to register early for the 2025 reunion and for their hotel room. Reunion Registration and Hotel Reservation forms received by February 6, 2025, will be included in a drawing to take place at the February 22, 2025, Space Coast Picnic. The winner of this drawing will receive a complimentary two-night stay (king or double queen room) at the Rosen Shingle Creek Resort during the 2025 Panama Canal Society Reunion. A second drawing will be held on March 29, 2025, at the PCS/UF/Friends of the Museum luncheon at UF. (1) Complimentary three-night stay (king or queen room). (2) Upgrade to a suite. (3) Dinner certificate for \$200 for Calla Bella or A Land Remembered fine dining restaurants. All of these redeemed at Rosen Shingle Creek Resort during the 2025 PCS Reunion. Prizes are non-transferable and only valid for the person winning the drawing. All these prizes are donated by the Rosen Shingle Creek Resort

****PLEASE CAREFULLY READ ALL THE INFORMATION IN THIS PACKET PRIOR TO REGISTERING****

NOTICES CONCERNING REUNION ACTIVITIES

MEMBERSHIP

All persons eligible to join the Society and plan to attend the reunion must be enrolled as a member before June 12, 2025, for the applicant to be approved for membership in sufficient time to participate in the reunion. The annual membership fee of \$50 for current members must be paid by January 31, 2025. After January 31, 2025, add a \$10 late fee to the \$50. All new and inactive members (not members in 2024) must pay the \$50 + \$10 admin fee. The Governors Club is a 5-year membership for \$250. The Reunion Registration, Hotel Reservation and Payment Form (Pages G & H) will be accepted from only those members who have paid their 2025 membership dues prior to May 23, 2025. For membership submission, use the form in the back of the *Canal Record* or go online to www.pancanalsociety.org, then the Membership link. Email or call the Society Office at (813) 949-6699 during office hours for any assistance with your application. **Do not combine membership fees with reunion fees on the same check. Two separate checks, please.**

DEADLINES

♦ The registration deadline for the Annual Reunion, Golf Tournament, Advanced Tickets, Vendor application, and Hotel Reservations is **May 23, 2025**. Members are encouraged to send their reunion registration and hotel reservation in early since available hotel rooms and event tickets have been known to sell out well in advance of established deadlines. **Note: All hotel suites and guestrooms are on a first-come, first-served basis. Once these suites and guestrooms are full, we cannot accept further reservations. We may have a waiting list, so please plan accordingly.**

♦ **TICKETS** purchased for the various reunion activities will not be mailed in advance but instead will be held at the Society's Reunion Registration area for pickup by the member during registration operating hours. Please make it a point to pick up your registration packet early when arriving at the hotel. **Requests for ticket refunds will not be honored if received after June 12, 2025, unless there are extenuating circumstances and are approved by the Executive Board after the reunion. Once approved, refunds will be issued after the reunion. Email the PCS Office with your request and extenuating circumstances.** REUNION REGISTRATION FEES ARE NOT REFUNDABLE.

♦ **HOTEL RESERVATIONS** must be canceled at least 72 hours in advance to avoid losing the first night's guarantee deposit. Contact the Lodging Chairpersons (Betty LeDoux) (24/7) zonianbk@aol.com or Debbie (Egolf) Lane at (727) 424-7598 or delane214@gmail.com to either change arrival or departure dates or to cancel your hotel reservations. **PLEASE PHONE CALLS ONLY MONDAY THROUGH FRIDAY FROM 4:00 P.M. TO 8:00 P.M. EST. OR CALL THE SOCIETY OFFICE DURING OFFICE HOURS.**

**DO NOT CONTACT HOTEL DIRECTLY
AS THEY WILL REFER YOU BACK TO THE
LODGING CHAIRPERSONS.**

Please do not call the hotel "JUST TO BE SURE" until after July 1, 2025. Please understand that processing your reservations from the Lodging Chairpersons into the hotel system takes several weeks. Rest assured that once you receive a confirmation number, the hotel will honor your booking.

REUNION REGISTRATION (Gatlin Ballroom A-1)

In order to attend the Reunion, all members are required to register with the Society and must pay a non-refundable \$15.00 advance registration fee for each registered person in their family. Non members and / or guests 18 and over have to pay a non-refundable \$25.00 advance registration fee. Reunion registration can also be accomplished online at the Society's website <http://www.pancanal-society.org> at the "Reunion" link.

At Registration in the Convention Center, a volunteer will review the contents of your registration envelope with you and you will be required to sign the envelope acknowledging that your packet is correct. **NOTE: Late Registration is \$20.00 for current members and \$30.00 for non-members on-site.**

2025 Reunion Registration Disclaimer: If you need someone other than yourself to pick up your pre-paid ticket(s) and name badge(s) at Registration during the designated times at the Reunion, an email message must be received before 4:00 p.m. on June 23, 2025, by the Society office at office@pancanalsociety.org, using your email address on file with the Panama Canal Society Office. Designate ONE person to pick up your ticket(s) and name badge(s). **Granting this permission to pick-up your packet at the reunion will not be accepted without this email.**

INFORMATION AND SOCIETY OFFICE

(Gatlin Ballroom Registration Desk 1)

The Information and Society Office desk is staffed during posted operating hours to disseminate information and assist reunion attendees. It is the focal point for information and directions for all reunion activities, including mini-reunions, hotel services and serves as a message center through maintenance of a bulletin board for use by reunion attendees. Members wishing to conduct Society business or having membership-related matters to discuss are welcome to visit the Information / Society Office during posted operating hours. It is also the center for the sale of Society license plates, decals, *Canal Records* and other Society related items, including "LOST AND FOUND" items.

IDENTIFICATION

Only registered Reunion guests with the Panama Canal Society will be able to attend Society events. **Proper identification (name badge) will be provided to each registered guest at Registration and must be worn to gain access to dances, vendors, meetings, and pool party. You will receive a 25% discount in most food outlets by wearing your current 2025 reunion name badge. Excludes alcoholic beverages.**

(e.g., schools, Canal operation, sports, social life, popular culture, defense, etc.), and within each category, emcees will ask questions that will test the limits of your knowledge. The questions will be appropriate for participants of all ages so we hope that families with multiple generations will take part. A few of the questions will be selected from the popular "Panama Canal Trivia" board game that the Panama Canal Museum created in 2004. Throughout the session, we also will share photos and images of objects relating to the categories and questions. We hope that you'll join us and play for bragging rights because each member of the winning team will win a special certificate proclaiming that they are no dummies when it comes to Canal history! The Cultural Seminar is sponsored by the Panama Canal Society, University of Florida George A. Smathers Libraries, and Friends of the Panama Canal Museum Collection at UF. Also be sure to stop by the Museum room to view our new exhibit. Don't miss the 2025 Cultural Seminar. Friday, July 4, 2025, at 2:00 p.m.

.....
16th ANNUAL POOL PARTY (*Shingle Creek Adult Pool and Sun Deck - Saturday 1:00 p.m. - 5:00 p.m.*)

The very popular and fun Poolside Party will be held once again with entertainment, games, and beverages. You must have your 2025 Reunion Name Badge and Photo ID to participate. A DJ will be providing the entertainment.

.....
BINGO *Gatlin A4 - Thursday and Saturday Afternoons*
 "Bingo" Ted Kaufer will host the popular, free-of-charge bingo games on Thursday and Saturday 2:00 p.m. - 4:00 p.m. with lots of fun and prizes to be won.

.....
THURSDAY NIGHT AT THE YACHT CLUB
DANCE 9:00 p.m. - 12:00 a.m. (Gatlin Ballroom E1-E3) Featuring *The Salsumba Orchestra*, sponsored by BHS975 - Tickets are sold at the door. See page Q for more information.

.....
FRIDAY NIGHT DANCE Friday 9:00 p.m. - 1:00 a.m. (*Gatlin Ballroom D*)
 Featuring "*Aquinas*" sponsored by BHS Class of 1980 - See page Q for more information.

.....
FRIDAY DJ DANCE Friday (11:00 p.m. - 2:00 a.m.) (*Gatlin Ballrooms E1 - E3*)
 Dance ticket requests will be filled in the order of receipt until allowable room capacity is met. Attire is casual. Admittance is restricted to members/guests age 15 and older. See page R for more information.

.....
ANNUAL LUNCHEON Saturday (11:30 a.m. -2:00 p.m.)(*Gatlin D Ballroom*)
 The Panama Canal Society is thrilled to have author, trained museologist, archivist, docent and historian from Panama - Wendy Tribaldos will give an exciting presentation about the 1964 Riots from both the Panamanian and United States perspectives. (Check this issue and future issues of the *Canal Record* for more information)

The luncheon menu will be: Bistec Picado, Beef Tips, Onions, TriColored Peppers, Yellow Rice, Pigeon Peas and Butter Fried Plantains -OR- Cold Lunch Chicken Caesar or Vegetarian Greek Salad both with Plated Chef Selection Dessert, Coffee Decaf Tea Iced Tea. Please note any special diet restrictions on your registration form. Entrance into the luncheon by ticket holders only will be strictly enforced. Entry into the room to only listen or observe the special program will not be permitted. Luncheon tickets will not be sold at the reunion. Entrance into the luncheon by ticket holders only! Assigned tables of 8 persons, (10 if requested).

.....
SATURDAY NIGHT BALL (*Gatlin C Ballroom*)
 The Saturday night dance will feature the great music, and dancing to the farewell performance by Frankie Pretto and the Parranda Band from 9:00 p.m. to 1:00 a.m. Dress is business casual (No ripped or faded jeans, shorts, t-shirts, cut-offs, flip-flops, or tank tops). Large purses, bags, or backpacks will not be allowed into the ballroom. CHILDREN MUST BE AT LEAST 12 YEARS OF AGE TO ATTEND THIS DANCE. See page R for more information.

.....
DESPEDIDA (*Gatlin C*)
 Say farewell to your friends at the Despedida held on Sunday, July 6, 2025. The doors open at 9:30 a.m. Come early and get a good seat. The Folkloric Dancers, Sentimiento Panameno will perform for your entertainment and pleasure at 10:00 a.m. The dance group will be available afterward for photographs. What an excellent setting to bid your friends farewell until next year. Come and experience a little bit of Panama!

.....
DESPEDIDA LOTTERY (*Gatlin B Foyer*)
 Despedida 2025 will also feature the drawing of the 24th Annual Despedida Lottery to liven up the always colorful and entertaining closing ceremony on Sunday morning. Lottery tickets are priced at one ticket for \$5.00, three tickets for \$10.00 and eight tickets for \$20.00 are available at the Despedida Lottery table located near the Registration/Vendor area throughout the reunion. ALL of the monies collected will be distributed to the four lucky prize winners.

A WORD OF CAUTION - YOU MUST BE PRESENT AT THE DESPEDIDA IN ORDER TO WIN. NO REFUNDS.

.....
DISCOUNTS
 Don't forget to ask for your 25% Panama Canal Society discount when purchasing food at select hotel food outlets (alcoholic beverages not included). Your 2025 Reunion Name Badge is proof of entitlement. So, be sure to have it with you!

SPECIAL DRINK PRICES ARE PROVIDED TO MEMBERS AT THE SOCIETY REUNION LOCATIONS/EVENTS.

REGISTRATION FORM SUBMISSION **INSTRUCTIONS**

Due to the magnitude of incomplete or erroneously completed registration forms received for reunion activities, it has been necessary for the Executive Board to adopt a policy that provides for these registration forms to be placed in a pending file and not processed until correct or complete data, as well as the proper amount of fees are provided by the applicant. When put aside, the registration form will lose its priority status and a new priority date will be assigned when the registration form is finally completed properly, and the correct monies received. PLEASE, to avoid delays in processing your registration form and not affect your original receipt date for ticket and lodging priority, remit the correct amount of money and be sure that all necessary information is supplied and correctly stated. **Also, remember that dues and reunion registration are to be paid with separate check, money order or credit card.**

.....

NOTICES AND INSTRUCTIONS FOR HOTEL **RESERVATIONS**

GENERAL COMMENTS

Hotel reservations will **ONLY** be accepted from Society members who have paid their 2025 membership dues and the \$15.00 reunion Registration fee. **NON-MEMBER GUESTS WILL PAY A \$25.00 REGISTRATION FEE.** The Registration fee is required for everyone 18 years of age or older. **Members are allowed to reserve one room per membership, and you need to be a member to reserve a room.** Hotel reservations and subsequent changes to reservations may be made **ONLY** with the Society's Lodging Chairpersons.

The Society's contractual reunion hotel rates of \$140.00 / \$250.00 / \$325.00 plus (12.5%) tax are available only to registered members beginning June 29 through July 7, 2025. Only one guest room reservation per member will be permitted at the Society's reunion rate, and the reserving member must occupy the room. Rooms will be reserved in the same order as reservation requests are received and approved until all available guest rooms are filled. Rooms will be assigned by the hotel when members check in.

Reservation forms that are placed in a pending status due to non-payment of fees or lack of information, will lose their priority and a new priority date will be assigned when the form is complete. The Society will make every effort possible to expeditiously advise those applicants who could not be processed.

SUBMISSION OF HOTEL ROOM **RESERVATION FORM**

HOTEL RESERVATIONS MUST BE RECEIVED BY MAY 23, 2025, AT THE SOCIETY OFFICE. RESERVATIONS RECEIVED AFTER MAY 23RD WILL BE RETURNED TO THE SENDER.

To reserve a guest room or suite, the Society's Reunion Registration, Hotel Reservation Payment Form on **pages G and H** must be completed in its entirety, either printed in black ink or typed and accompanied by one night's hotel deposit (**with check payable to Rosen Shingle Creek or via Credit Card**).

The registration form should be submitted to the Panama Canal Society, Inc., and received in the Society Office at **15131 Ogden Loop, Odessa FL 33556**, or online **no later than May 23, 2025.**

There are a limited number of "Accessible" King and Double Queen rooms available for assignment to persons having "special needs" (accessible tub and showers with bars and accessible with no bars, roll-in shower, etc.), which will be assigned in the same order that reservation requests are received and approved. Requests should be noted in the space provided in the hotel reservation section of the Reunion Registration, Hotel Reservation and Payment Form. In order to better accommodate you please specify the needs for which you require an Accessible room. **PLEASE NOTE that "accessible" relates only to ADA / Special Needs rooms and NOT to the proximity of reunion events.**

LODGING INFORMATION

To hold a reservation with a check, money order, or credit card, the total should include the cost of one-night plus the 12.5% tax:

Guest Rooms - Double Queen or Standard King are \$140.00 plus 12.5% tax for a total of **\$157.50**

Executive Parlor and 2-Bay Hospitality Suite are \$250.00 plus 12.5% tax for a total of **\$281.25**

Grand Parlor and 3-Bay Hospitality Suite are \$325.00 plus 12.5% tax for a total of **\$365.62**

Connectors to parlors or suites are \$140.00 plus 12.5% tax for a total of **\$157.50** **NOTE: Hospitality Suites located on the ground floor do not have connecting sleeping rooms.**

A diagram of each of the room types is provided in this packet to help you with your room selection.

To expedite the room check-in process, we are asking that you provide us with an estimated time of your arrival at the hotel in Orlando. Everyone's cooperation in this regard would be appreciated.

NOTE: HOTEL CHECK-IN IS 3:00 p.m.

HOTEL CONFIRMATIONS TAKE 2 - 3 MONTHS TO RECEIVE AN EMAIL CONFIRMATION: Questions contact the Lodging Chairpersons **zonianbk@aol.com** (24/7) (Betty LeDoux) or call (727) 424-7598 for Debbie (Egolf) Lane or **dclane214@gmail.com**. **PLEASE PHONE CALLS ONLY MONDAY THROUGH FRIDAY FROM 4:00 P.M. TO 8:00 P.M. EST.**

HELPFUL REUNION INFORMATION - KNOW BEFORE YOU GO

Refer to the map provided in this registration packet for directions to Rosen Shingle Creek (page S).

When you arrive at the hotel (CHECK-IN IS AT 3:00 P.M.), proceed to hotel registration to check into your room.

Review the hours of operation for reunion registration and other events in this registration packet. Once you arrive at the reunion, proceed at your earliest convenience, during operational times, to the reunion registration area in the Convention Center to obtain your name badge, information packet, and all preordered event tickets. At registration, a volunteer will review with you the contents of your registration envelope, and you will be required to sign the envelope acknowledging that your order is correct.

Reunion event tickets are **NOT PRE-MAILED**. Furthermore, **only the primary person registering for the Reunion may pick up the name badges and tickets from the registration room. Be certain that all of your guests are registered for the Reunion.**

PLEASE NOTE: LATE REGISTRATION AT THE REUNION WILL BE \$20.00 FOR CURRENT MEMBERS AND \$30.00 FOR NON MEMBER GUESTS THEREFORE, ADVANCE REGISTRATION IS STRONGLY RECOMMENDED.

CLASS REUNION INFORMATION

If you are attending a class reunion, information regarding your class reunion event will be posted at the Information/Society Office desk bulletin board. This is **IF** your class reunion chairperson has furnished us with this information. In the event he/she has not, we will do all that we can to assist you in locating your class reunion activities.

DON'T FORGET to ask for your 25% Panama Canal Society discount when purchasing food at select hotel outlets. **Your Reunion Name Badge is proof of entitlement.** So, be sure to have it with you!

IMPORTANT NOTES: The consumption of alcoholic beverages on hotel property and at Society functions, to include dances, is limited to beverages purchased at the hotel bars. In accordance with state law, the consumption of guest-supplied alcoholic beverages is permitted only within the confines of the guest's room. No bottled alcohol will be carried into Society functions. Consumption of alcoholic beverages by underage individuals will not be permitted nor tolerated and will be dealt with in the harshest manner possible. Beverages are not permitted on the dance floors at any time.

REMEMBER

YOUR SOCIETY MEMBERSHIP MUST BE CURRENT TO REGISTER FOR THE PANAMA CANAL SOCIETY REUNION, OBTAIN A HOTEL ROOM AT OUR SPECIAL RATE AND PURCHASE SOCIETY EVENT TICKETS.

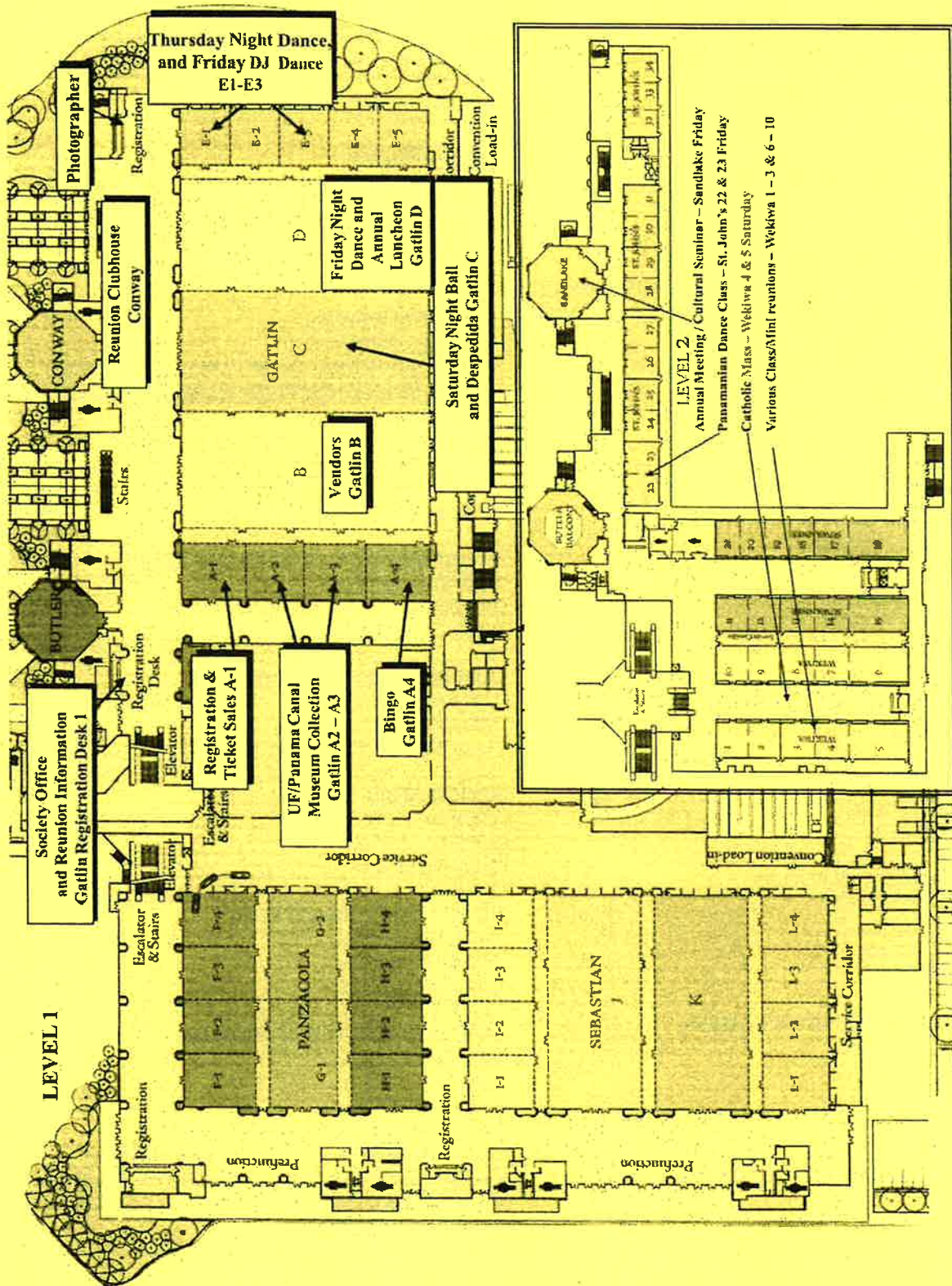
VOLUNTEERS - If you would like to volunteer, please contact the PCS Office at office@pancanalsociety.org.

PARKING INFORMATION

There is complimentary overnight self-parking for resort guests attending the reunion; however, non-resort guests will be required to pay the rate in place during the reunion per day plus tax.

IN ACCORDANCE WITH STATE LAW, SMOKING IS NOT ALLOWED INSIDE THE THE ROSEN SHINGLE CREEK PROPERTY.





PANAMA CANAL SOCIETY

Rosen Shingle Creek - 2025 Reunion - Schedule of Events

WEDNESDAY, JULY 2ND

REGISTRATION

5:00 p.m. - 7:00 p.m.

Gatlin Ballroom A1

INFORMATION/SOCIETY OFFICE

5:00 p.m. - 7:00 p.m.

Gatlin Ballroom Registration Desk 1

THURSDAY, JULY 3RD

45TH CHAGRES INVITATIONAL GOLF TOURNAMENT:

Rosen Shingle Creek golf course - check-in: 8:00 a.m. shotgun start: 8:30 a.m.

VENDOR ROOM SALES

10:00 a.m. - 6:00 p.m.

Gatlin Ballroom B

UF/PANAMA CANAL MUSEUM COLLECTION

(Exhibits & Auction)

10:00 a.m. - 6:00 p.m.

Gatlin Ballroom A2 & A3

INFORMATION/SOCIETY OFFICE

10:00 a.m. - 12:00 noon

2:00 p.m. - 3:30 p.m.

4:00 p.m. - 5:30 p.m.

Gatlin Ballroom Registration Desk 1

REGISTRATION

10:00 a.m. - 12:00 noon

2:00 p.m. - 3:30 p.m.

4:00 p.m. - 5:30 p.m.

Gatlin Ballroom A1

ON-SITE DANCE TICKET SALES

10:00 a.m. - 12:00 noon

2:00 p.m. - 3:30 p.m.

4:00 p.m. - 5:30 p.m.

Gatlin Ballroom Foyer

DESPEDIDA LOTTERY TICKET SALES

10:00 a.m. - 12:00 noon

2:00 p.m. - 3:30 p.m.

4:00 p.m. - 5:30 p.m.

Gatlin Ballroom Foyer

BINGO: NO CHARGE TO PARTICIPATE!

2:00 p.m. - 4:00 p.m.

Gatlin Ballroom A4

REUNION CLUBHOUSE

11:00 a.m. - 4:00 p.m.

Conway (MAY CLOSE EARLY IF NOT IN USE)

\$2.00 CUBA LIBRE HAPPY HOUR FROM 4:00 - 5:00 P.M.

THURSDAY NIGHT YACHT CLUB REUNION KICK OFF

DANCE with the band *The Salsumba Orchestra*, a Salsa and Latin Jazz Orchestra based in Orlando sponsored by BHS 1975

9:00 p.m. - 12:00 a.m. - Gatlin Ballroom E1 - E3

FRIDAY, JULY 4TH

ANNUAL MEETING (All PCS Members Meeting)

ALL SOCIETY MEMBERS ARE ENCOURAGED TO ATTEND!

9:00 doors open, 9:30 a.m. meeting begins.

Sandlake (Level 2 Convention Center)

REUNION CLUBHOUSE

11:00 a.m. - 4:00 p.m.

CONWAY ROOM (MAY CLOSE EARLY IF NOT IN USE)

\$2.00 CUBA LIBRE HAPPY HOUR FROM 4:00 P.M. - 5:00 P.M.

VENDOR ROOM SALES

1:00 p.m. - 6:00 p.m.

Gatlin Ballroom B

UF/PANAMA CANAL MUSEUM COLLECTION

(Exhibits & Auction)

1:00 a.m. - 6:00 p.m.

Gatlin Ballroom A2 & A3

INFORMATION/SOCIETY OFFICE

1:00 p.m. - 2:30 p.m.

3:00 p.m. - 4:30 p.m.

Gatlin Ballroom Registration Desk 1

REGISTRATION

1:00 p.m. - 2:30 p.m.

3:00 p.m. - 4:30 p.m.

Gatlin Ballroom A1

ON-SITE DANCE TICKET SALES

1:00 p.m. - 2:30 p.m.

3:00 p.m. - 4:30 p.m.

Gatlin Ballroom Foyer

DESPEDIDA LOTTERY TICKET SALES

1:00 p.m. - 2:30 p.m.

3:00 p.m. - 4:30 p.m.

Gatlin Ballroom Foyer

CULTURAL SEMINAR - "Test Your Knowledge of

Canal History!" ALL REUNION ATTENDEES ARE ENCOURAGED

TO ATTEND! PRESENTED BY UNIVERSITY OF FLORIDA - SMATH-

ERS LIBRARIES 2:00 p.m. - 3:30 p.m.

Sandlake (2nd Level of Convention Center)

BAILE PANAMEÑO DANCE CLASS

3:00 p.m. - 5:00 p.m.

St. John's 22 & 23 - (2nd level of Convention Center)

PANAMA CANAL SOCIETY
Rosen Shingle Creek - 2025 Reunion - Schedule of Events (Continued)

FRIDAY, JULY 4TH (CONTINUED)

FRIDAY NIGHT DANCE WITH THE BAND AQUINAS

sponsored by BHS 1980

9:00 p.m. - 1:00 a.m.

Gatlin Ballroom D

AFTER HOURS DJ DANCE with DJ Mac

11:00 p.m. - 2:00 a.m.

Gatlin Ballroom E1 - E3

SATURDAY, JULY 5TH

REUNION CLUBHOUSE

11:00 a.m. - 4:00 p.m.

\$2.00 Cuba Libre Happy Hour 5:00 - 6:00 p.m.

Conway (MAY CLOSE EARLY IF NOT IN USE)

ANNUAL LUNCHEON

11:30 A.M. - 2:00 P.M.

Gatlin Ballroom D

VENDOR ROOM SALES

10:00 a.m. - 6:00 p.m.

Gatlin Ballroom B

UF/PANAMA CANAL MUSEUM COLLECTION

(Exhibits & Auction)

10:00 a.m. - 5:00 p.m.

Gatlin Ballroom A2 & A3

16TH ANNUAL POOLSIDE PARTY

1:00 - 5:00 p.m.

Rosen Shingle Creek Adult Pool

INFORMATION/SOCIETY OFFICE

10:00 a.m. - 11:30 a.m.

Closed in afternoon

Gatlin Ballroom Registration Desk 1

REGISTRATION

10:00 a.m. - 11:30 a.m.

Closed in afternoon

Gatlin Ballroom A1

ON-SITE DANCE TICKET SALES

10:00 a.m. - 11:30 a.m.

Closed in afternoon

Gatlin Ballroom Foyer

DESPEDIDA LOTTERY TICKET SALES

10:00 a.m. - 11:30 a.m.

3:00 p.m. - 4:30 p.m.

Gatlin Ballroom Foyer

SATURDAY, JULY 5TH (CONTINUED)

BINGO: NO CHARGE TO PARTICIPATE!

2:00 p.m. - 4:00 p.m. Gatlin Ballroom A4

CATHOLIC MASS

4:00 p.m. - 5:00 p.m. Wekiwa 4 & 5 (2nd level Convention Center)

MURGA

8:00 p.m.

Gatlin Ballroom Foyer

ANNUAL BALL

9:00 p.m. - 1:00 a.m.

Gatlin Ballroom C

SUNDAY, JULY 6TH

VENDOR SALES AND BREAKDOWN

9:00 a.m. - 12:00 noon

Gatlin Ballroom B

DESPEDIDA

Doors open at 9:30 a.m. - and Dance Performance begins at 10:00 a.m. - Gatlin Ballroom C

All society members and guests are invited.

The Despedida Lottery drawing will be held at Despedida on Sunday morning. You must be present to win the Despedida Lottery.

NOTE: This Schedule of Events is subject to change. An updated Schedule will be printed in the June Canal Record and posted at the Reunion



ROSEN SHINGLE CREEK RESORT HIGHLIGHTS

This beautiful hotel is a great location to have our reunion. It is nestled along historic Shingle Creek, headwaters of the Everglades, and has nature trails, inviting swimming pools and tropical foliage to offer a serene environment, perfect for relaxation.

The many alluring attributes of Rosen Shingle Creek Resort are: An 18-hole, par 72, championship golf course on site, designed by the Arnold Palmer Design Company; a full-service, 13,000 square foot Spa, featuring nine treatment rooms; a state-of-the-art fitness center with cardiovascular equipment, free weights and televisions; four pools - zero entry family pool, kiddies wading pool, lap pool, and a quiet lounging pool conveniently located by the Cat-Tails Pool Bar & Grill; two Jacuzzis; two lighted tennis courts; basketball court with basketballs available; sand volleyball court; nature trails; access to guided canoe trips (seasonal); fishing by reservation; and on-site shopping, including women's and men's apparel, DJ'S and Pro Shop.

If dining is your pleasure, there are over nine venues to choose from, including: (1) *A Land Remembered* - a steak house named after the novel by Patrick Smith and also called the Clubhouse at noon for a casual lunch. (2) *Cala Bella and Bella's Bar* - this is a fine dining Italian Bistro, (3) *Café Osceola* - a buffet restaurant (open for breakfast only) serving a buffet and a la carte menu, (4) *Banrai Sushi* serving specialty sushi, sashimi and other signature dishes, (5) *Tobias Burgers and Brews* - featuring a delightful take on gourmet burgers, specialty flatbreads and craft beers, (6) *Mi Casa Tequila Taqueria* - specialty Mexican food and handcrafted Margaritas, (7) *18 Monroe Street Deli* - a 24-hour deli and market, offering a variety of items from a quick snack to a quick-to-order meal. (8) *Smooth Java Coffee Bar* - a coffee, smoothies and juice bar, serving Starbucks coffee and an assortment of pastries and snacks, (9) *Head Waters Lounge* - Lobby lounge bar which is centrally located and a perfect meeting place, (10) *Cat-Tails Pool Bar & Grill* - is adjacent to the pools and serves a range of food and beverage items in a relaxed outdoor setting, (11) *Creek Ice Creamery* - serves a variety of treats, and (9) In-Room Service-24-hour full-service dining.

Rosen Shingle Creek Resort is situated on 230 acres of land in the heart of Orlando. It is within one mile of the Orange County Convention Center; ten minutes from the Orlando International Airport; ten minutes (4 miles) from the Universal Orlando theme park and Wet 'n Wild; within minutes to Sea World; within ten to fifteen minutes to Disney World; within fifteen minutes to all major shopping venues like the Mall of Millennia, Florida Mall and Premium Outlets; five minutes from world-class shopping at Pointe Orlando; less than an hour from the Atlantic Ocean; forty-five minutes from Cape Canaveral; and a 90-minute drive from the Gulf Coast. The Panama Canal Society held our 2008-2010, 2014-2016, 2022, 2023 and 2024 Reunions at the Rosen Shingle Creek Resort and they were well attended with most attendees excited to return again. The guest rooms are beautiful and very comfortable. The Creek Sleeper definitely gives you a good night's sleep. We will be located in the Gatlin Ballrooms area (first level of the Convention Center) with some activities located on the second level above the ballrooms. The distance from your guest room to the Ballroom is a good walk but it is all under one roof. Bring your walking shoes or rent a scooter if you have difficulty in walking long distances. Elevators and escalators are available in the Convention Center.

SPECIAL DRINK PRICES WILL BE OFFERED TO OUR MEMBERS THROUGHOUT SOCIETY SPONSORED EVENTS.

Sodas	\$2.75
Bottled Water	\$2.50
Beer - (bottle) Domestic	\$4.00
Wine	\$5.00
Mixed Drinks - Call Brands	\$4.75
Mixed Drinks - Premium Brands	\$5.25



 ROSEN
SHINGLE CREEK

BAILE PANAMEÑO DANCE CLASS

Friday, July 4, 2025

Sentimiento Panama, the Panamanian dance group that has performed for the Panama Canal Society for many years at our Despedida, will once again teach unique dance steps used in the "typical" dances from Panama during the reunion. You will also learn the historical significance behind the different dances. Beginners are welcome! You don't need to be an accomplished dancer to participate. Join us to refresh your dancing skills or learn to dance "Tipico" style for the first time. Cost for this class is **\$15.00 per person** or **\$25.00 per couple**. Class will be held on Friday, July 4, 2025, from 3:00 p.m. - 5:00 p.m. in **St. John's 22 & 23 - (2nd level of Convention Center)**.

Pre-registration is necessary and a minimum of six participants is required to conduct the class. In the event there are not enough participants to hold the class, your fee will be promptly refunded to you. Complete your registration now. You don't want to miss this opportunity.



BAILE PANAMEÑO CLASS BEGINNERS ARE WELCOME

REGISTRATION DEADLINE IS May 23, 2025

AGES 12 AND UP - \$15 PER PERSON / \$25 PER COUPLE

CLASS HELD FRIDAY, JULY 4, 2025 3:00 P.M. - 5:00 P.M.

1. _____ Phone# _____

PLEASE PRINT NAME - USE BLACK INK ONLY

2. _____ Phone# _____

PLEASE PRINT NAME - USE BLACK INK ONLY

TOTAL ENCLOSED \$ _____

Credit Card Number: _____ CVV: _____ Exp. Date: _____

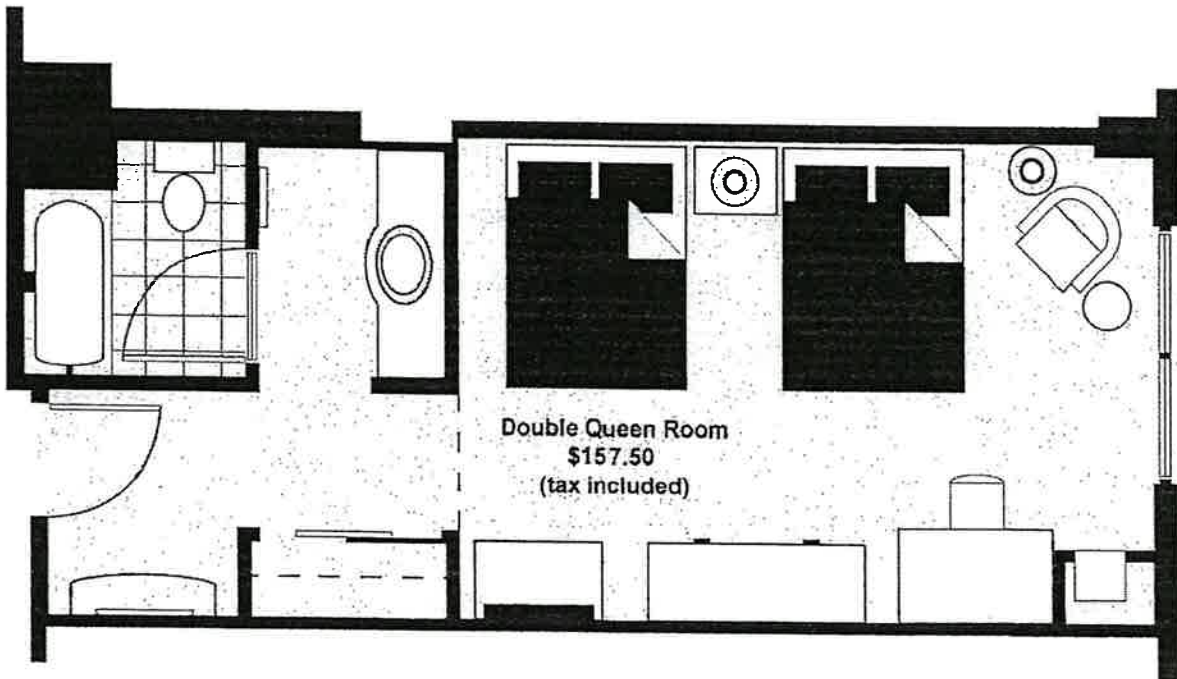
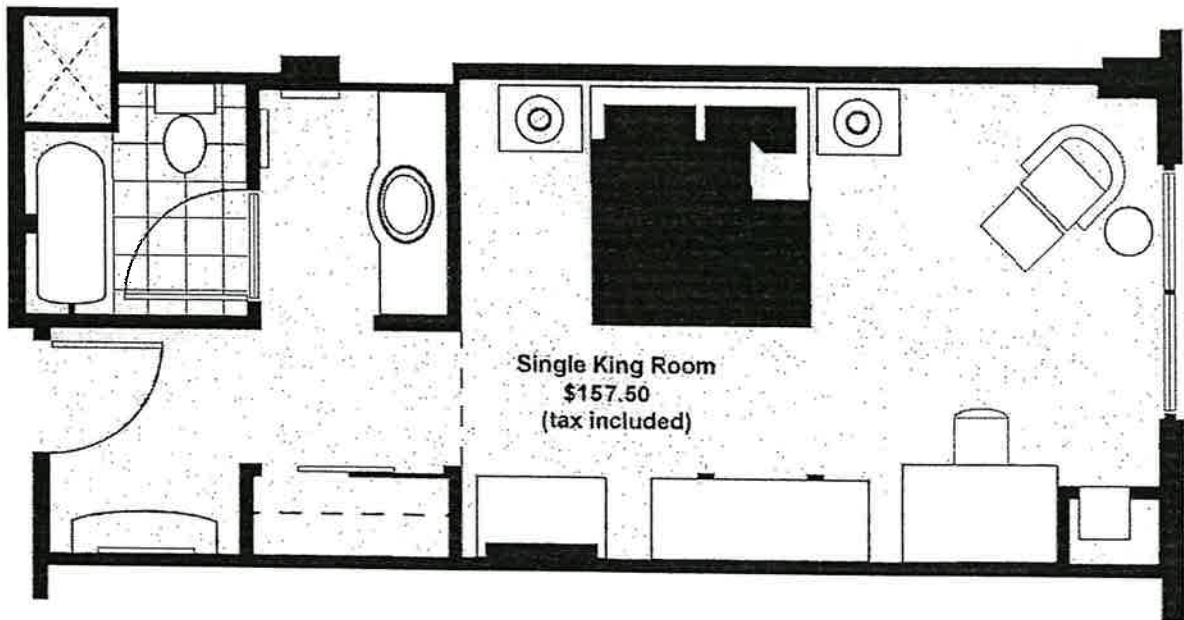
Member/Cardholder Signature: _____

MAIL FORM IN ITS ENTIRETY WITH PAYMENT TO

PANAMA CANAL SOCIETY, INC., 15131 Ogden Loop, Odessa, FL 33556

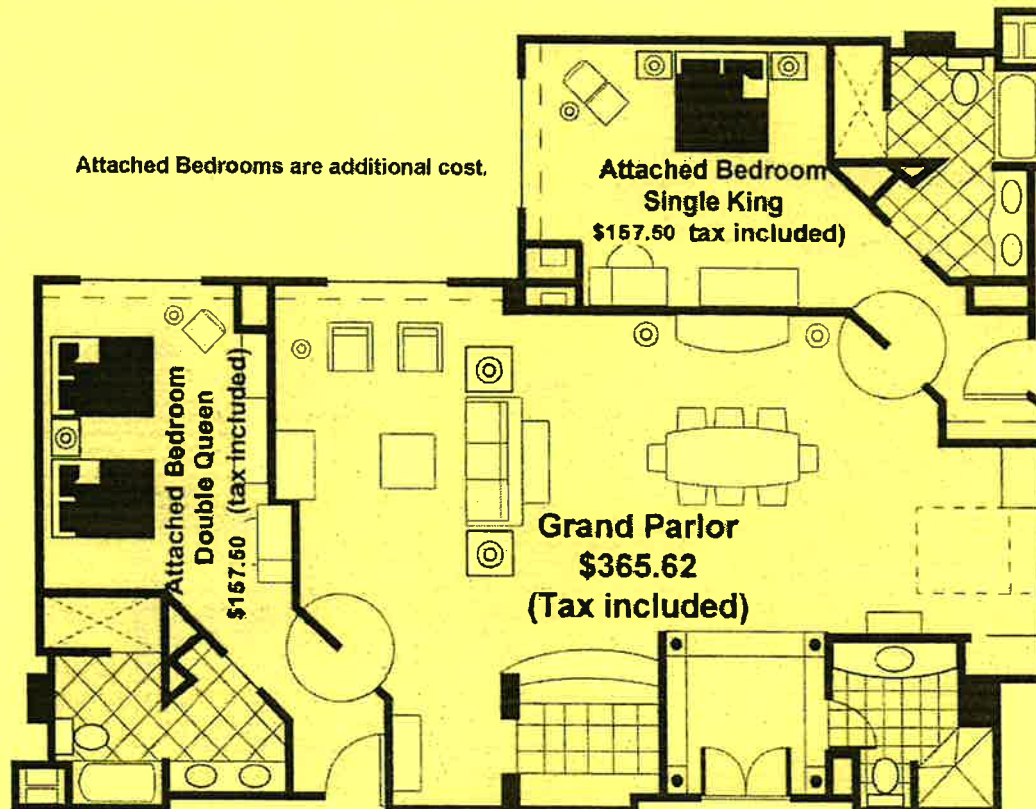
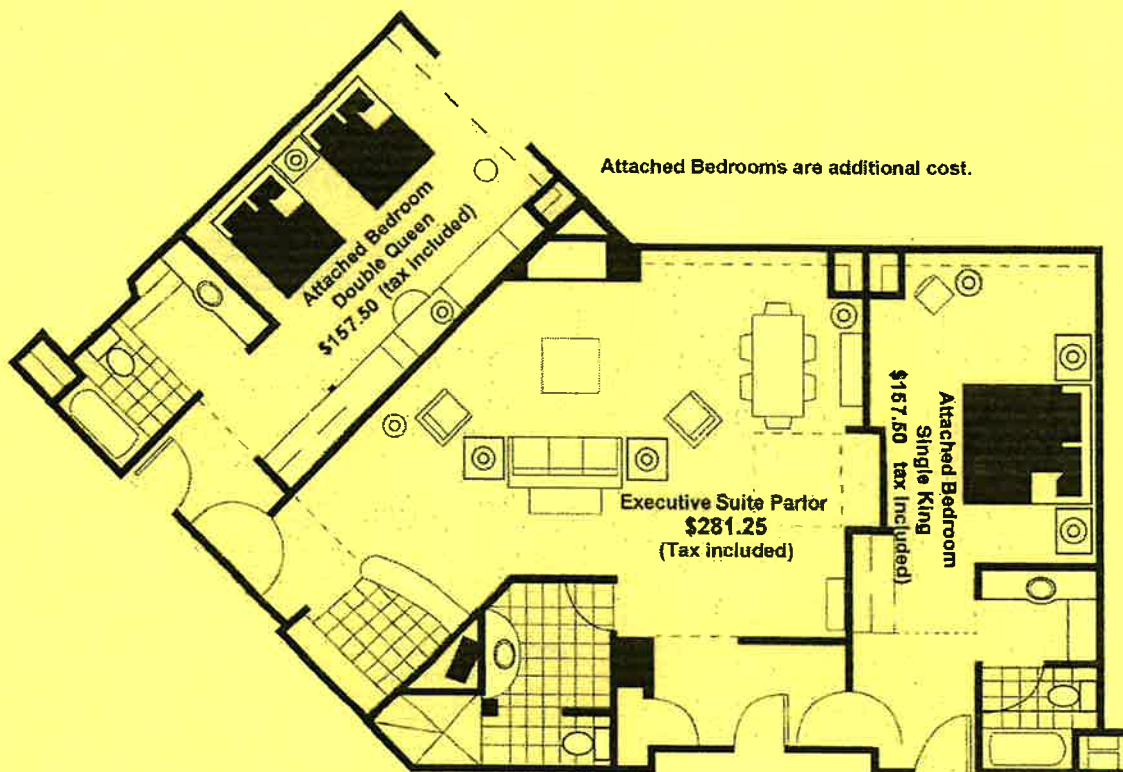
HOTEL ROOM AND SUITE FLOOR PLANS

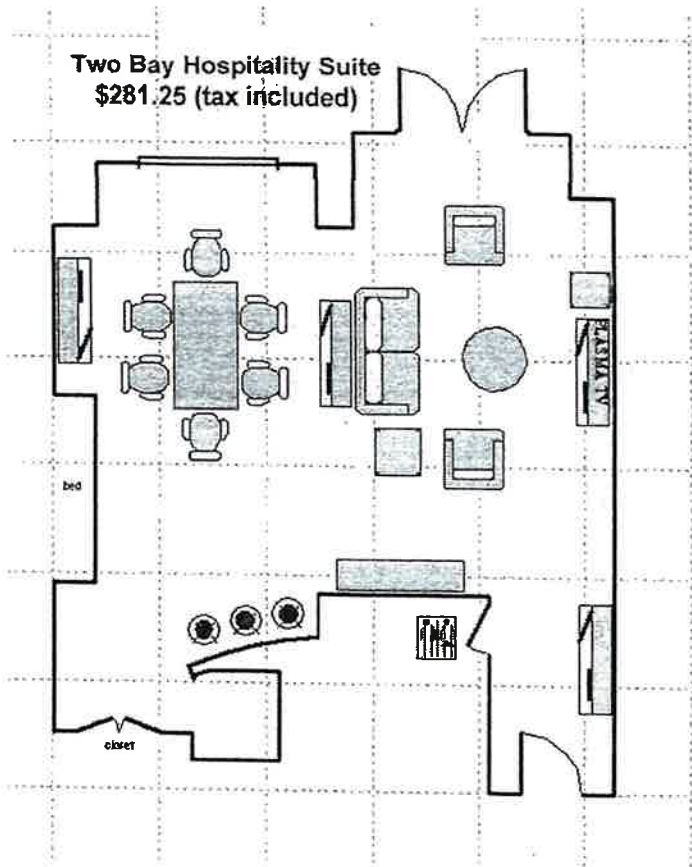
Single King and Double Queen



Executive and Grand Parlor Suites

Attached bedrooms are an additional cost and must be registered for separately





2 Bay Hospitality Suite

872 sq ft

Queen Size Murphy Bed

Sitting Area

Wet Bar

Conference/Dining Table
up to 6 people

Reception for 30 people
on a flow basis

No attached bedrooms

3 Bay Hospitality Suite

1308 sq ft

Queen Size Murphy Bed

Cocktail Table with Chairs

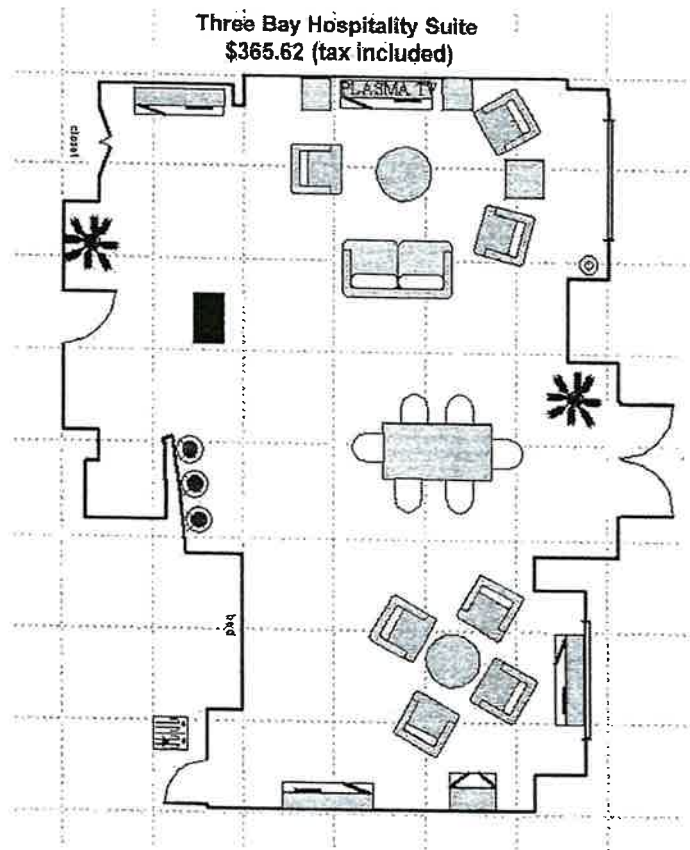
Sitting Area

Wet Bar

Conference/Dining Table up to
6 people

Reception for 50 people on a
flow basis

No attached bedrooms



THE PANAMA CANAL SOCIETY
IS PROUD TO PRESENT THREE EVENINGS OF EXCITING
ENTERTAINMENT FOR YOUR PLEASURE!



**SAT 2025 REUNION
~~THURSDAY~~ NIGHT
YACHT CLUB DANCE
FEATURING THE
Salsumba
Orchestra**

**THURSDAY JULY 3, 2025
9:00 p.m. - 12:00 a.m.
GATLIN BALLROOM E**

**SPONSORED BY BALBOA HIGH
SCHOOL
CLASS OF 1975**

FRIDAY NIGHT DANCE



**2025 REUNION
FRIDAY NIGHT DANCE
WITH THE BAND "AQUINAS"**

**Friday JULY 4, 2025
9:00 p.m. - 1:00 a.m.
GATLIN BALLROOM D**

**SPONSORED BY BALBOA HIGH SCHOOL
CLASS OF 1980**

Tickets sold at the door

FRIDAY NIGHT AT THE ROCKING DJ Dance

FRIDAY JULY 4, 2025 - 11:00 p.m. - 2:00 a.m.
GATLIN BALLROOM E1 - E3

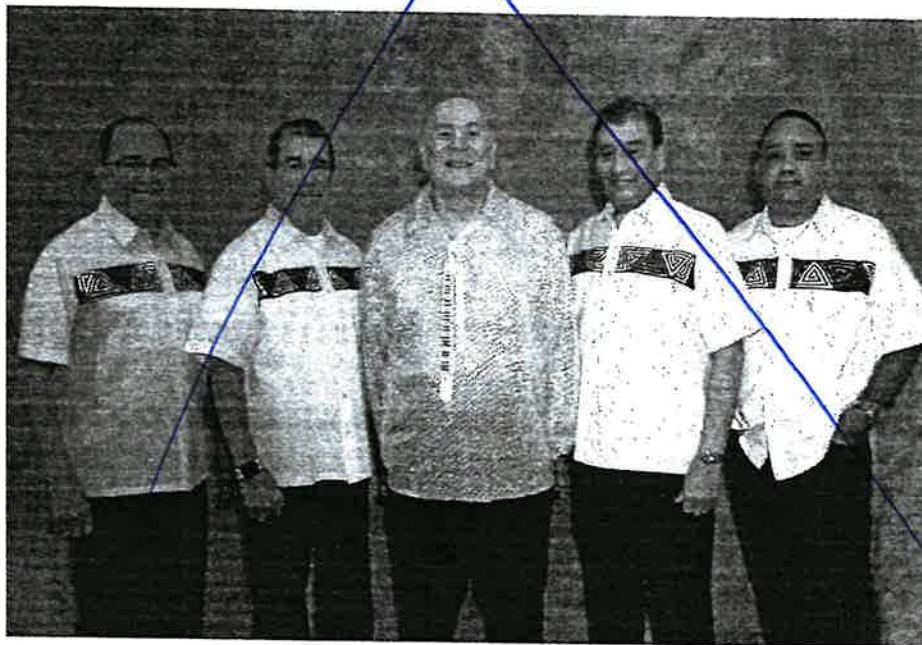


HOSTED BY THE PANAMA CANAL SOCIETY - FEATURING "DJ MAC" - Advanced and on-site
ticket sales - \$10.00. Page G to register.

The Panama Canal Society is honored to celebrate Frank Pretto and the Parranda Band's retirement at the 2025 Annual Reunion.

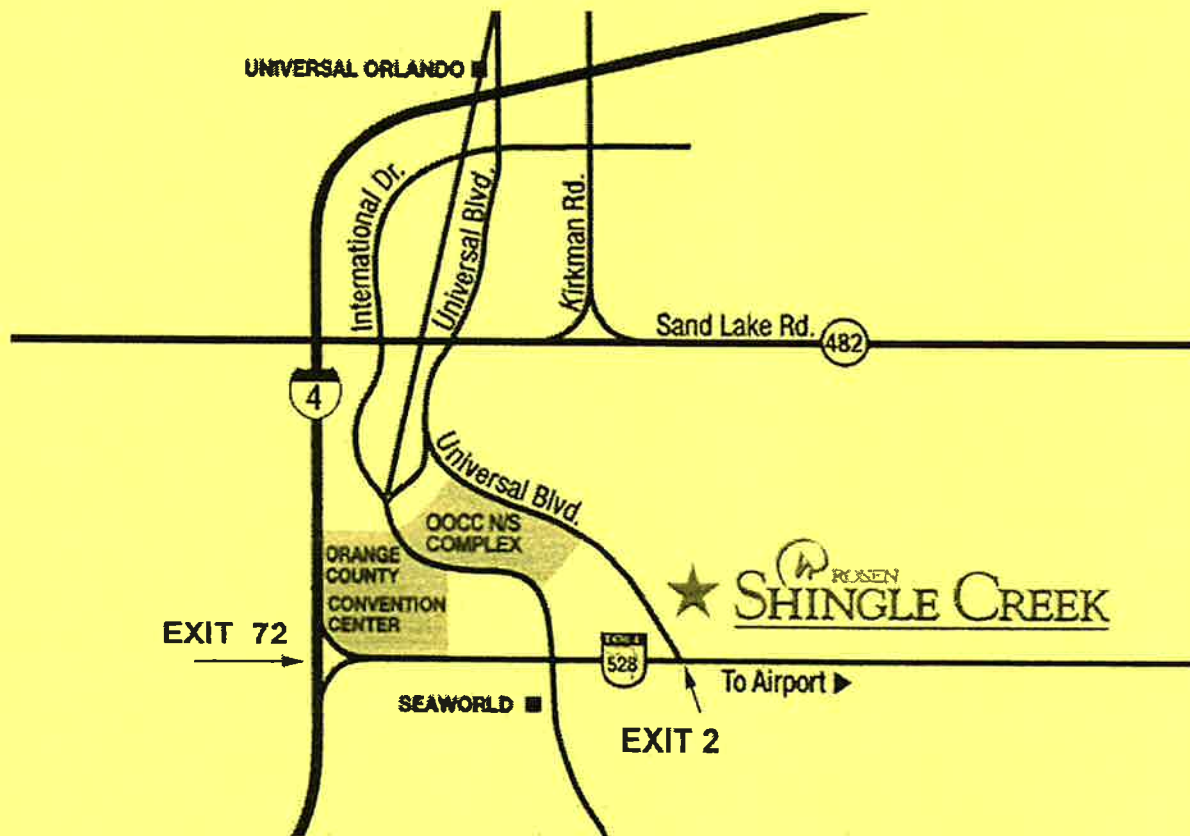
Frankie Pretto and the Parranda Band have been the first-line exclusive band for the Saturday Night Annual Ball since 1992. For over 33 years, the band has kept the memories of Lucho music alive, and played typico and salsa music for our dancing and listening pleasure. Frank's unique style of music is reminiscent of living in the Canal Zone and Panama during festive occasions. Members are invited to join Frank Pretto and the Parranda Band at the Annual Ball on Saturday night, July 5, 2025.

ANNUAL BALL
"FRANKIE PRETTO AND THE PARRANDA BAND"
SATURDAY JULY 5, 2025 - 9:00 p.m. - 1:00 a.m.
GATLIN BALLROOM C



QUESTIONS?

Contact **Bill McLaughlin** (352) 400-0436 or PCS Office (813) 949-6699



ROSEN SHINGLE CREEK IS CONVENIENTLY LOCATED ON UNIVERSAL BOULEVARD JUST OFF THE BEACHLINE EXPRESSWAY (SR-528, EXIT #2) AND A HALF MILE EAST OF THE ORANGE COUNTY CONVENTION CENTER.

FROM ORLANDO INTERNATIONAL AIRPORT:

Take the north exit from the airport to SR-528 (the Beachline Expressway).

Take SR-528 Westbound to Exit #2.

From the exit ramp, turn right onto Universal Blvd at the traffic light.

The entrance to Rosen Shingle Creek will be on the right side of Universal Blvd.

FROM I-4:

Take I-4 Eastbound to Exit #72 (the Beachline Expressway / SR-528).

Head east on SR-528 to Exit #2 (Universal Blvd. / Orange Blvd.).

From the exit ramp, veer to the left then turn left onto Universal Blvd.

The entrance to Rosen Shingle Creek will be the second traffic light on Universal Blvd.

MEARS

TRANSPORTATION GROUP®

ORLANDO INTERNATIONAL AIRPORT (MCO) TO/FROM ROSEN SHINGLE CREEK

TRANSPORTATION OPTIONS 2025

MEARS TAXI SERVICE

Approximate cost of \$55.00 based on meter.

Taxis are available curbside at MCO without a reservation. Ask the Taxi Starter for a Mears Taxi.

To request a pickup from the hotel, please call 407-422-2222.

MEARS LUXE EXCLUSIVE SERVICE

Enjoy the convenience of being met at baggage claim by a Mears Chauffeur and transferred via your own vehicle directly to the Rosen Shingle Creek. To make a reservation please visit www.mears.com.

Sedan	2 passengers	\$106.00 to hotel / \$89.00 from hotel
SUV	4 passengers	\$133.00 to hotel / \$115.00 from hotel
Luxury Van	7 passengers	\$133.00 to hotel / \$115.00 from hotel

MEARS GROUP TRANSPORT

For groups of 10 passengers or more, please contact Erin Leonhardt at eleonhardt@mears.com.

Rates above do not include driver gratuity.
Rates are subject to change.

Rev 10.2024